

## GLOBAL TECHNOLOGY FUND Y-ACC-USD

28 FEBRUARY 2019

## Approach and Style

HyunHo employs a fundamental, bottom-up approach, focusing on identifying quality companies with sustainable growth prospects trading at attractive valuations. He believes that understanding technology trends, innovations and new technologies are key to identifying long-term leaders in the industry. Investment opportunities HyunHo favours tend to fall into three categories – growth, cyclical and special situations. Growth companies are those focused on innovations or with disruptive technology that are set to experience high growth. Cyclical opportunities are found in sub-sectors and typically have strong market positions while special situations are mispriced businesses with recovery potential.

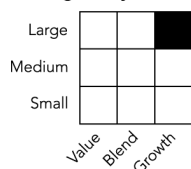
## Objectives &amp; Investment Policy

- Aims to provide long-term capital growth with the level of income expected to be low.
- At least 70% invested in the shares of companies throughout the world that will provide, or benefit significantly from, technological advances and improvements in relation to products, processes or services.
- Has the freedom to invest outside the fund's principal geographies, market sectors, industries or asset classes.
- May invest in assets directly or achieve exposure indirectly through other eligible means including derivatives. Can use derivatives with the aim of risk or cost reduction or to generate additional capital or income, including for investment purposes, in line with the fund's risk profile.
- The fund has discretion in its choices of investments within its objectives and policies.
- Income is accumulated in the share price.
- Shares can usually be bought and sold each business day of the fund.

## Independent Assessment

Information in this section is the latest available at date of publication. Further details can be found in the Glossary section of this factsheet. As some ratings agencies may use past performance to produce their assessments, these are not a reliable indicator of future results.

## Morningstar Style Box ®



## Important Information

The value of investments and any income from them may go down as well as up and an investor may not get back the amount invested. The use of financial derivative instruments may result in increased gains or losses within the fund. This fund targets specific industries. This can make it more volatile than funds with more diversified portfolios. **Private and Confidential** - This document, which is provided at your request, is intended only for use by investment professionals and/or intermediaries. Distribution of this document, in whole or in part, to any other persons, including the retail public is strictly prohibited.

**Indonesia:** Neither this document nor any copy hereof may be distributed in Indonesia or passed on within Indonesia or to persons who are citizens of Indonesia (wherever they are domiciled or located) or entities of or residents in Indonesia in a manner which constitutes a public offering under the laws of the Republic of Indonesia. The Funds have not been registered with the Indonesian Financial Services Authority (Otoritas Jasa Keuangan) and therefore may not be offered or sold in Indonesia or to persons who are citizens of Indonesia (wherever they are domiciled or located) or entities of or residents in Indonesia in a manner which constitutes a public offering under the laws of the Republic of Indonesia.

**Malaysia:** The Funds mentioned have not been and will not be registered with the Malaysia Securities Commission for public offer. Any information contained or incorporated herein is not an advertisement and is not intended for public distribution within Malaysia.

**Philippines:** The Funds mentioned have not been registered with the Philippine Securities and Exchange Commission for public offer.

**Thailand:** The Funds mentioned have not been registered with the Office of the Securities and Exchange Commission of Thailand for public offer.

## Fund Facts

Launch date: 01.09.99

Portfolio manager: Hyunho Sohn

Appointed to fund: 31.03.13

Years at Fidelity: 13

Fund size: \$4,188m

Number of positions in fund\*: 61

Fund reference currency: Euro (EUR)

Fund domicile: Luxembourg

Fund legal structure: SICAV

Management company: FIL Investment Management (Luxembourg) S.A.

Capital guarantee: No

\*A definition of positions can be found on page 3 of this factsheet in the section titled "How data is calculated and presented."

## Share Class Facts

Other share classes may be available. Please refer to the prospectus for more details.

Launch date: 23.02.17

NAV price in share class currency: 14

ISIN: LU1560650563

SEDOL: BYMVC57

WKN: A2DLYS

Bloomberg: FFGTYAU LX

Dealing cut-off: 15:00 UK time (normally 16:00 Central European Time)

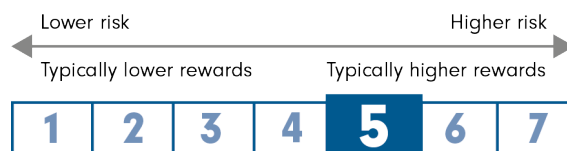
Distribution type: Accumulating

Ongoing Charges Figure (OCF) per year: 1.05% (30.04.18)

OCF takes into account annual management charge per year: 0.8%

## Share Class Risk and Reward Profile

This risk indicator is taken from the key information document at the relevant month-end. Because it may be updated during a month, please refer to the key information document for the most up-to-date information.



- The risk category was calculated using historical performance data.
- The risk category may not be a reliable indication of the future risk profile of the fund, is not guaranteed and may change over time.
- The lowest category does not mean a "risk free" investment.
- The risk and reward profile is classified by the level of historical fluctuation of the Net Asset Values of the share class, and within this classification, categories 1-2 indicate a low level of historical fluctuations, 3-5 a medium level and 6-7 a high level.

## GLOBAL TECHNOLOGY FUND Y-ACC-USD

28 FEBRUARY 2019

Past performance is not a reliable indicator of future results. The fund's returns can be affected by fluctuations in currency exchange rates.

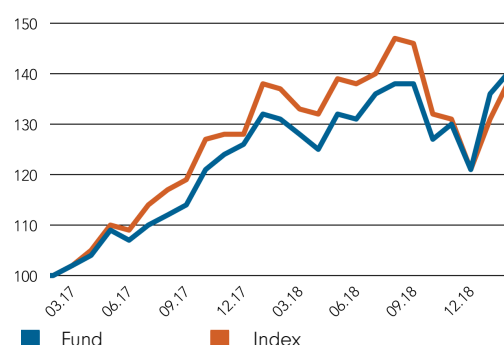
## Performance Comparator(s)

Peer Group Universe	Morningstar GIF Sector Equity Technology
Market index from 31.12.98	MSCI AC World Information Technology (N)

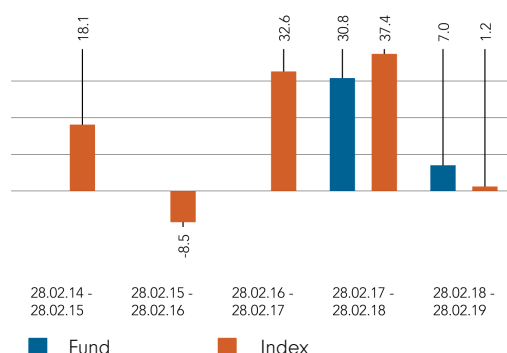
Market index is for comparative purposes only unless specifically referenced in the Objectives & Investment Policy on page 1. The same index is used in the positioning tables on this factsheet.

Where the effective date for the current market index is after the share class launch date, full history is available from Fidelity.

## Cumulative performance in USD (rebased to 100)

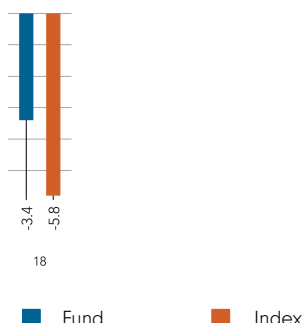


## Performance for 12 month periods in USD (%)



Performance is shown for the last five years (or since launch for funds launched within that period).

## Performance for calendar years in USD (%)



## Performance to 28.02.19 in USD (%)

	1m	3m	YTD	1yr	3yr	5yr	Since 23.02.17*
Fund cumulative growth	3.2	7.8	15.5	7.0	-	-	40.0
Index cumulative growth	6.0	5.6	14.3	1.2	84.3	99.2	38.3
Fund annualised growth	-	-	-	7.0	-	-	18.2
Index annualised growth	-	-	-	1.2	22.6	14.8	17.5
Ranking within Peer Group Universe							
A-Euro	86	40	51	18	14	1	
Total number of funds	91	89	90	72	51	45	
Quartile ranking**	4	2	3	1	2	1	

Source of fund performance and volatility and risk measures is Fidelity. Performance is excluding initial charge.

Basis: nav-nav with income reinvested, in USD, net of fees.

Market indices are sourced from RIMES and other data is sourced from third-party providers such as Morningstar.

\*Performance commencement date.

\*\*Quartile rank refers to performance over time rated on a scale of 1-4. A ranking of 1 indicates that the item being ranked is in the top 25% of the sample and so on. Rankings are based on a performance record that is included in the Peer Group Universe. In line with Investment Association methodology, this record may include a track record extension from a legacy share class and the record may not be the same class of this factsheet.

If you took an initial charge of 5.25% from an investment, this is the equivalent of reducing a growth rate of 6% per annum over 5 years to 4.9%. This is the highest initial charge applicable, if the initial charge you pay is less than 5.25%, the impact on the overall performance will be less.

## GLOBAL TECHNOLOGY FUND Y-ACC-USD

28 FEBRUARY 2019

## Introduction

This factsheet contains information about the composition of the fund at a particular point in time. It aims to help you understand how the fund manager is positioned to achieve the fund's objectives.

The Equity Exposure table below provides an overall view of the fund. This represents - in percentage terms - how much of the fund is invested in the market. The higher the figure, the more the fund will take part in any market rises (or falls).

The definitions section provides a more comprehensive explanation of the individual elements in the table.

The exposure and positioning tables on page 4 break the fund down into a number of different views, each providing a different perspective on the fund's investments.

## How data is calculated and presented

Portfolio composition data has been calculated and presented according to several general principles, which are listed below.

- **Aggregation:** all investments, including derivatives, linked to a particular issuing company have been combined to form a total percentage holding for each company. The aggregate holding is referred to in this factsheet as a position. Where a company is listed in two separate countries, each listing may be classified as a separate issuing company. Exchange Traded Funds (ETFs) and derivatives on ETFs are treated as individual securities - ie not aggregated.

- **Categorisation:** for investments that have underlying securities we use the attributes of the underlying issuing company or common share to determine the appropriate sector, market capitalisation band and geographic area.

- **Derivatives:** all derivatives are included on an exposure basis and, where necessary, are delta-adjusted. Delta-adjusting expresses derivatives in terms of the equivalent number of shares that would be needed to generate the same return.

- **"Basket" securities:** securities that represent a number of company shares - like index futures or options - are allocated to categories (such as country) whenever possible. Otherwise they are included in the "Other Index / Unclassified" category.

## Equity Exposure (% TNA)

	Exposure (% TNA)
Equity	98.2
Other	0.0
Uninvested Cash	1.8

## Definition of terms:

**Equity:** the percentage of the fund that is currently invested in the equity market.

**Other:** the value of any non-equity investments (excluding cash funds) expressed as a percentage of fund TNA.

**Uninvested cash:** this is 100% minus the fund's Equity exposure and minus Other. This leaves any residual cash exposure that is not invested in shares or via derivatives.

**% TNA:** Data is presented as a percentage of TNA, which stands for Total Net Assets (the value of all the fund's assets after the deduction of any liabilities).

## Active Money

Active Money	68.7%
--------------	-------

This is the sum of the fund's overweight positions (including effective cash) when compared to the market index.

## GLOBAL TECHNOLOGY FUND Y-ACC-USD

28 FEBRUARY 2019

## Sector/Industry Exposure (% TNA)

GICS Sector	Fund	Index	Relative
Information Technology	68.6	100.0	-31.4
Communication Services	22.4	0.0	22.4
Consumer Discretionary	3.2	0.0	3.2
Industrials	2.8	0.0	2.8
Materials	1.1	0.0	1.1

Total Sector Exposure	98.2	100.0
Other Index / Unclassified	0.0	0.0
Total Equity Exposure	98.2	100.0

## Country Exposure (% TNA)

	Fund	Index	Relative
USA	63.0	75.8	-12.8
Korea (South)	7.1	4.2	2.9
Germany	6.3	2.1	4.1
Japan	6.0	5.0	1.0
China	4.8	0.7	4.1
Taiwan	3.4	5.0	-1.6
Netherlands	3.2	1.6	1.7
United Kingdom	1.5	0.3	1.2
France	1.2	0.9	0.3
Sweden	1.2	0.6	0.6
Other Countries	0.5	3.9	-3.4
Total Country Exposure	98.2	100.0	
Other Index / Unclassified	0.0	0.0	
Total Equity Exposure	98.2	100.0	

## Top Positions (% TNA)

	GICS Sector
APPLE INC	Information Technology
SAMSUNG ELECTRONICS CO LTD	Information Technology
ALPHABET INC	Communication Services
INTEL CORP	Information Technology
IBM CORPORATION	Information Technology
MICROSOFT CORP	Information Technology
SAP SE	Information Technology
NXP SEMICONDUCTORS BELGIUM NV	Information Technology
ELECTRONIC ARTS INC	Communication Services
MARVELL TECHNOLOGY GROUP LTD	Information Technology

## Top Overweight Positions (% TNA)

	Fund	Index	Relative
ALPHABET INC	4.8	0.0	4.8
ELECTRONIC ARTS INC	2.8	0.0	2.8
NXP SEMICONDUCTORS BELGIUM NV	3.2	0.5	2.8
MARVELL TECHNOLOGY GROUP LTD	2.6	0.2	2.5
IBM CORPORATION	4.1	1.8	2.3
SAMSUNG ELECTRONICS CO LTD	5.5	3.2	2.3
BAIDU INC	2.0	0.0	2.0
SOFTBANK GROUP CORP	2.0	0.0	2.0
SAP SE	3.6	1.5	2.0
ACTIVISION BLIZZARD INC	2.0	0.0	2.0

## Positions Concentration (% TNA)

	Fund	Index
Top 10	41.2	48.1
Top 20	61.6	63.0
Top 50	94.6	78.7

## Market Capitalisation Exposure (% TNA)

USD	Fund	Index	Relative
>10bn	76.8	94.3	-17.5
5-10bn	8.0	4.0	4.0
1-5bn	6.6	1.7	4.9
0-1bn	1.4	0.0	1.4
Total Market Cap Exposure	92.8	100.0	
Index / Unclassified	5.4	0.0	
Total Equity Exposure	98.2	100.0	

## Regional Exposure (% TNA)

	Fund	Index	Relative
North America	63.0	76.8	-13.7
Emerging Markets	15.7	11.5	4.2
Europe (ex-UK)	11.9	6.3	5.6
Japan	6.0	5.0	1.0
UK	1.5	0.3	1.2
Asia Pacific (ex-Japan)	0.0	0.2	-0.2
Total Regional Exposure	98.2	100.0	
Other Index / Unclassified	0.0	0.0	
Total Equity Exposure	98.2	100.0	

	Fund	Index	Relative
Country			
USA	6.5	12.2	-5.7
Korea (South)	5.5	3.2	2.3
USA	4.8	0.0	4.8
USA	4.3	3.6	0.7
USA	4.1	1.8	2.3
USA	3.8	11.9	-8.1
Germany	3.6	1.5	2.0
Netherlands	3.2	0.5	2.8
USA	2.8	0.0	2.8
USA	2.6	0.2	2.5

## Top Underweight Positions (% TNA)

	Fund	Index	Relative
MICROSOFT CORP	3.8	11.9	-8.1
APPLE INC	6.5	12.2	-5.7
VISA INC	0.0	3.8	-3.8
CISCO SYSTEMS INC	0.0	3.5	-3.5
MASTERCARD INC	0.0	3.0	-3.0
ADOBE INC	0.0	1.9	-1.9
BROADCOM INC	0.0	1.7	-1.7
SALESFORCE COM INC	0.0	1.7	-1.7
PAYPAL HLDGS INC	0.0	1.6	-1.6
ACCENTURE PLC	0.0	1.5	-1.5

## Definition of terms:

**Index:** the index used in the positioning tables on this page is the index defined in the Performance Comparator(s) section on page 2 of this factsheet.

**Top Positions:** those companies in which the largest percentages of the fund's total net assets are effectively invested. Positions in other funds - including ETFs (Exchange Traded Funds) - can appear in this table, but index derivatives form part of an "Other Index / Unclassified" category which will not appear.

**Top Overweight & Underweight Positions:** those positions which have the largest active weight relative to the index. Positions in other funds - including ETFs (Exchange Traded Funds) - can appear in this table, but index derivatives form part of an "Other Index / Unclassified" category which will not appear.

**Positions Concentration:** illustrates the weight of the top 10, 20 and 50 positions in the fund and the weight of the top 10, 20 and 50 positions in the index. It does not attempt to show the coincidence of security ownership between fund and index.

The **sector/industry classification** used (ie GICS, ICB, TOPIX or IPD) varies by fund. Full descriptions of GICS, ICB, TOPIX and IPD can be found in the glossary.

## GLOBAL TECHNOLOGY FUND Y-ACC-USD

28 FEBRUARY 2019

## Attribution

Performance attribution is produced in the currency shown below. For funds with multiple share classes, the attribution return reflects the aggregate performance across all the share classes. It may therefore deviate from the published return for a particular share class. When using the analysis for hedged share classes, please consider that the attribution is shown before the impact of hedging.

The contributions shown in the tables are before the impact of charges. If charges are applied, their effect is captured in the "Other" category in the tables and will also be reflected in the fund return.

All investments, including derivatives, linked to a particular issuing company have been combined to form a total percentage for each issuing company.

The sector/industry and country contribution tables (where relevant) display a maximum of eleven individual sectors/industries or countries. For funds investing in more than eleven sectors/industries or countries, only top five and bottom five are listed, with the contribution from other sectors/industries or countries shown in the "Other Sectors" or "Other Countries" category.

Currency of attribution Euro (EUR)  
One month relative return (%) -2.87

## Position Contribution (%)

1 month

	Average Relative Weight	Relative Performance Contribution		Average Relative Weight	Relative Performance Contribution
<b>TOP CONTRIBUTORS</b>			<b>TOP DETRACTORS</b>		
SOFTBANK GROUP CORP	1.9	0.20	SAMSUNG ELECTRONICS CO LTD	2.0	-0.33
INGENICO GROUP	0.7	0.13	ACTIVISION BLIZZARD INC	1.9	-0.32
MELLANOX TECHNOLOGIES LTD	1.5	0.12	BAIDU INC	2.2	-0.29
INTEL CORP	0.6	0.11	ALPHABET INC	4.7	-0.27
HP INC	-0.5	0.09	TRIPADVISOR INC	1.7	-0.25
SK HYNIX INC	-0.6	0.07	NETEASE INC	1.5	-0.25
WIRECARD AG	-0.2	0.07	FACEBOOK INC	2.0	-0.22
BROADCOM INC	-1.8	0.06	VISA INC	-3.8	-0.14
NOKIA CORP	-0.5	0.06	YAHOO JAPAN CORP	1.6	-0.13
WESTERN DIGITAL CORP	1.9	0.06	MICROSOFT CORP	-8.1	-0.12

Positions in other funds - including ETFs (Exchange Traded Funds) - can appear in this table, but index derivatives form part of an "Index / Unclassified" category which will appear in the table(s) below when relevant.

## Country Contribution (%)

1 month

## CONTRIBUTIONS TO RELATIVE RETURN

	Average Relative Weight	Security Selection	Country Selection	Total Relative Contribution
Japan	0.9	0.19	-0.04	0.16
France	0.2	0.09	0.01	0.09
India	-1.2	0.00	0.08	0.08
Finland	-0.5	0.00	0.06	0.06
Spain	-0.5	0.00	0.01	0.01
Germany	3.8	0.12	-0.21	-0.09
Taiwan	-2.1	-0.21	0.02	-0.19
Korea (South)	2.6	-0.16	-0.25	-0.41
China	4.3	-1.00	0.36	-0.65
United States	-11.9	-1.51	-0.11	-1.62
Other Countries	2.3	-0.29	0.13	-0.16
<b>Total Primary Assets</b>	<b>-2.2</b>	<b>-2.77</b>	<b>0.04</b>	<b>-2.73</b>
Other*	2.2			-0.14
<b>TOTAL</b>	<b>0.0</b>			<b>-2.87</b>

\*Other includes portfolio components not already listed such as cash, expenses and other miscellaneous items.

## Glossary / additional notes

## Volatility &amp; Risk

**Annualised volatility:** a measure of how variable returns for a fund or comparative market index have been around their historical average (also known as “standard deviation”). Two funds may produce the same return over a period. The fund whose monthly returns have varied less will have a lower annualised volatility and will be considered to have achieved its returns with less risk. The calculation is the standard deviation of 36 monthly returns presented as an annualised number. Volatility for funds and indices are calculated independently of each other.

**Relative volatility:** a ratio calculated by comparing the annualised volatility of a fund to the annualised volatility of a comparative market index. A value greater than 1 indicates the fund has been more volatile than the index. A value less than 1 shows the fund has been less volatile than the index. A relative volatility of 1.2 means the fund has been 20% more volatile than the index, while a measure of 0.8 would mean the fund has been 20% less volatile than the index.

**Sharpe ratio:** a measure of a fund's risk-adjusted performance, taking into account the return on a risk-free investment. The ratio allows an investor to assess whether the fund is generating adequate returns for the level of risk it is taking. The higher the ratio, the better the risk-adjusted performance has been. If the ratio is negative, the fund has returned less than the risk-free rate. The ratio is calculated by subtracting the risk-free return (such as cash) in the relevant currency from the fund's return, then dividing the result by the fund's volatility. It is calculated using annualised numbers.

**Annualised alpha:** the difference between a fund's expected return (based on its beta) and the fund's actual return. A fund with a positive alpha has delivered more return than would be expected given its beta.

**Beta:** a measure of a fund's sensitivity to market movements (as represented by a market index). The beta of the market is 1.00 by definition. A beta of 1.10 shows that the fund could be expected to perform 10% better than the index in up markets and 10% worse in down markets, assuming all other factors remain constant. Conversely, a beta of 0.85 indicates that the fund could be expected to perform 15% worse than the market return during up markets and 15% better during down markets.

**Annualised tracking error:** a measure showing how closely a fund follows the index to which it is being compared. It is the standard deviation of the fund's excess returns. The higher the fund's tracking error, the higher the variability of fund returns around the market index.

**Information ratio:** a measure of a fund's effectiveness in generating excess return for the level of risk taken. An information ratio of 0.5 shows the fund has delivered an annualised excess return equivalent to half the value of the tracking error. The ratio is calculated by taking the fund's annualised excess return and dividing it by the fund's tracking error.

**R<sup>2</sup>:** a measure representing the degree to which a fund's return can be explained by the returns of a comparative market index. A value of 1 signifies the fund and index are perfectly correlated. A measure of 0.5 means only 50% of the fund's performance can be explained by the index. If the R<sup>2</sup> is 0.5 or lower, the fund's beta (and therefore its alpha too) is not a reliable measure (due to a low correlation between fund and index).

## Ongoing charges

The ongoing charges figure represents the charges taken from the fund over a year. It is calculated at the fund's financial year end and may vary from year to year. For classes of funds with fixed ongoing charges, this may not vary from year to year. For new classes of funds or classes undergoing corporate actions (eg amendment to annual management charge), the ongoing charges figure is estimated until the criteria are met for an actual ongoing charges figure to be published.

The types of charges included in the ongoing charges figure are management fees, administration fees, custodian and depositary fees and transaction charges, shareholder reporting costs, regulatory registration fees, Directors fees (where applicable) and bank charges.

It excludes: performance fees (where applicable); portfolio transaction costs, except in the case of an entry/exit charge paid by the fund when buying or selling units in another collective investment undertaking.

For more information about charges (including details of the fund's financial year end), please consult the charges section in the most recent Prospectus.

## Historic yield

The historic yield for a fund is based on its dividends declared over the preceding 12 months. It is calculated by summing the dividend rates declared in that period, divided by the price as at the date of publication. Declared dividends may not be confirmed and may be subject to change. Where 12 months of declared dividend data does not exist a historic yield will not be published.

## Sector/industry classification

**GICS:** Global Industry Classification Standard (GICS) was developed by Standard & Poor's and MSCI Barra. GICS consists of 11 sectors, 24 industry groups, 69 industries and 158 sub-industries. More information is available at <http://www.msci.com/gics>

**ICB:** The Industry Classification Benchmark (ICB) is an industry classification developed by Dow Jones and FTSE. It is used to segregate markets into sectors within the macroeconomy. The ICB uses a system of 10 industries, partitioned into 19 supersectors, which are further divided into 41 sectors, which then contain 114 subsectors. More information is available at <http://www.icbenchmark.com/>

**TOPIX:** Tokyo stock Price Index, commonly known as TOPIX, is a stock market index for the Tokyo Stock Exchange (TSE) in Japan, tracking all domestic companies of the exchange's First Section. It is calculated and published by the TSE.

**IPD** means the Investment Property Databank who are a provider of performance analysis and benchmarking services for investors in real estate. IPD UK Pooled Property Funds Index - All Balanced Funds is a component of the IPD Pooled Funds Indices which is published quarterly by IPD.

## Independent Assessment

**Scope Fund Rating:** The rating measures how well a fund has balanced risk and reward relative to its peers. The rating is based solely on performance for funds with a five year track record. Funds with a shorter history also undergo qualitative assessment. For example, this may include looking at management style. The rating scale is A = very good, B = good, C = average, D = below average and E = poor.

**Morningstar Star Rating for Funds:** The rating measures how well a fund has balanced risk and reward relative to its peers. Star ratings are strictly based on past performance and Morningstar suggests investors use them to identify funds that are worthy for further research. The top 10% of funds in a category will receive a 5-star rating and the next 22.5% receive a 4-star rating. Only ratings of 4 or 5 stars are displayed on the factsheet.

**Morningstar Style Box:** The Morningstar Style Box is a nine-square grid that provides a graphical representation of the investment style of funds. It is based on fund holdings and classifies funds according to market capitalisation (the vertical axis) and growth and value factors (the horizontal axis). The value and growth factors are based on measures such as earnings, cashflow and dividend yield and use both historical and forward-looking data.



**GLOBAL TECHNOLOGY FUND Y-ACC-USD**

28 FEBRUARY 2019

**Important Information**

This document is for information only and should not be construed as an advertisement, investment recommendation, research or advice. It does not have regard to the specific investment objectives, financial situation and particular needs of any specific person who may receive it. You should seek advice from a financial adviser before investing in the fund(s). If you choose not to seek advice from a financial adviser, you should consider whether the fund(s) in question is suitable for you. Views expressed are subject to change.

The value of the shares of the fund(s) and the income accruing to them, if any, may fall or rise. The fund(s) may use financial derivatives, which entail specific risks as described in the prospectus. Past performance of the manager and the fund(s), and any forecasts on the economy, stock or bond market, or economic trends that are targeted by the fund(s), are not indicative of the future performance. No representation or warranty is made that any indicative performance or return will be achieved in the future by any member of the Fidelity Group. Fidelity, Fidelity International, and the Fidelity International Logo and F Symbol are trademarks of FIL Limited.

**Singapore**

FIL Investment Management (Singapore) Limited ["FIMSL"] (Co. Reg. No.: 199006300E) is the representative for the fund(s) offered in Singapore. Potential investors should read the prospectus, available from FIMSL or its distributors, before investing in the fund(s). This advertisement has not been reviewed by the Monetary Authority of Singapore.

**Indonesia**

The securities, which are subject of the Prospectus, have not been, and are not intended to be, registered with the Indonesian Financial Services Authority (Otoritas Jasa Keuangan), ("OJK"). This document is for information only and not an advertisement, investment recommendation, research or advice. Neither FIL Limited nor any other member within the Fidelity Group is licensed to carry out asset/fund management activities in Indonesia.

**Malaysia**

This document has not been and will not be registered as a prospectus with Malaysia Securities Commission. Accordingly, this document and any other information and any amendment or supplement hereto or any other invitation, advertisement or document relating to or in connection with the making available, offering for subscription or purchase or issuing invitation to subscribe for or purchase of units in the offshore fund, may not be circulated or distributed, nor may the units in the offshore fund be offered or sold, or be made the subject of an invitation for subscription or purchase, whether directly or indirectly, to the public or any members of the public in Malaysia. Neither FIL Limited nor any of its members have any intention to solicit your investment or subscription in the fund. Neither the offshore fund, the asset manager of the offshore fund, nor their representatives, directors and employees make any representations or warranties, expressed or implied, with respect to the completeness or accuracy of any of the information contained in this document or any other information (whether communicated in written or oral form) transferred or made available to you and expressly disclaim any liability for any loss you may suffer arising from or in reliance upon the whole or any part of the contents of this document.

The information and any materials contained in this document should not be considered as an offer or solicitation to buy or sell securities or provide investment advice or to provide any other capital markets or financial products or capital markets or financial services of any kind in Malaysia. Neither FIL Limited nor any other member within the Fidelity Group is licensed or registered to carry out, nor does it purport to carry out financial or capital markets services of any kind including asset/fund management activities in Malaysia under the Capital Markets and Services Act 2007 of Malaysia or Financial Services Act 2013 of Malaysia.

**Philippines**

The securities, which are subject of the Prospectus, have not been, and are not intended to be, registered with the Philippine Securities and Exchange Commission. The offer or sale of such securities is exempted from registration under Section 10.1(l) (as an offer made to qualified buyers) or Section 10.1(h) (as broker's transaction executed upon customer's order on any registered exchange or other trading market) of the Securities Regulation Code (the "Code"), as applicable. However, any future offer or sale of the securities in the Philippines must comply with the registration requirement under the Code unless such offer or sale qualifies as an exempt transaction. Neither FIL Limited nor any other member within the Fidelity Group is licensed to carry out asset/fund management activities in Philippines.

THE SECURITIES BEING OFFERED OR SOLD HEREIN HAVE NOT BEEN REGISTERED WITH THE PHILIPPINE SECURITIES AND EXCHANGE COMMISSION UNDER THE SECURITIES REGULATION CODE. ANY FUTURE OFFER OR SALE OF THE SECURITIES IS SUBJECT TO THE REGISTRATION REQUIREMENTS UNDER THE CODE UNLESS SUCH OFFER OR SALE QUALIFIES AS AN EXEMPT TRANSACTION.

**Thailand**

This document has not been registered as a prospectus with the Office of the Securities and Exchange Commission of Thailand. Accordingly, this document and any other information, in connection with the offer or sale, or invitation for subscription or purchase of units in the offshore fund, may not be circulated or distributed, nor may the units in the offshore fund be offered or sold, or be made the subject of an invitation for subscription or purchase, whether directly or indirectly, to the public or any members of the public in Thailand. Neither FIL Limited nor any of its members have any intention to solicit your investment or subscription in the fund.

Neither the offshore fund, the asset manager of the offshore fund, nor their representatives, directors and employees make any representations or warranties, expressed or implied, with respect to the completeness or accuracy of any of the information contained in this document or any other information (whether communicated in written or oral form) transferred or made available to you. Neither FIL Limited nor any other member within the Fidelity Group is licensed to carry out asset/fund management activities in Thailand.